

Journal of Research and Multidisciplinary

ISSN: 2622-9536 Print

ISSN: 2622-9544 Online

<http://journal.alhikam.net/index.php/jrm>

Volume 5, Issue 2, September 2022, Pages 602-618



Belief And Private Religious Practice As Religious Life Commitment of An Individual

Panmein Peter¹, Rabikanta Singh²

¹Manipur University, India

²Manipur University, India

Email : goodbros59@gmail.com

Abstract

The present article study and explore on Rongmei tribe of Manipur. Particularly, it has chosen on Noney (Longmai) area, which is inhabited by Rongmei people. All the villagers are committed and worship to God as Baptist is the major denomination. So these make a commitment of an individual. The findings suggest that commitment of a male individual is religious life for them which will relate to belief and private religious practice. The method analyse here in this paper is linear regression and reliability scale. These include model summary, ANOVA, Residual statistics in linear regression and item statistics in scale reliability. Belief and private religious practice will be commitment of an individual when R square change, F change, sig. F change, mean square, F, sig, standard deviation, Range, maximum/minimum, variance is less than alpha value (0.05) or near to zero (1). This relation to alpha value will support to religious life commitment through belief and private religious practice. The questionnaires refer to BMMRS multidimensionality develops by Fetzer Institute (1999).

Keywords: Rongmei, belief, private religious practice, religious life, commitment

Introduction

Rongmei are one of the indigenous tribe of Manipur. They inhabit in different place and in different district in Manipur. The present article or paper collectively study on Noney (Longmai) as target. Male members are chosen for the study. As male are the household leader and took major responsible in the society, it was taken. Religious life of male through belief and private religious practice made a commitment in the individual. These motives enhance the growth of society with a positive mind set. Moreover, Baptist is the only denomination that follows in this village. The study determines 120 male individual and also find their commitment on religious life by using SPSS software using regression and scale. 3- point likert scale, 5-point likert scale and 8-point likert scale was use to explore the commitment of individual.

Why it is study

Using SPSS software and analyse the data for belief and private religious practice among the Rongmei tribe is not yet done. It is empirical research work to study minutely about the religious life commitment through belief and private religious practice. One cannot ignore the religious life of the rongmei male. These make a commitment on the society through belief and private religious practice. Regression and scale reliability measure make a sense of commitment on the responding the questionnaire weightage.

Questionnaire of the study

The study questionnaire consists of eleven and categories into two parts. The first part is belief and consist of seven question and second is consist of four question and it be private religious practice.

Beliefs questionnaire

1. How much is religion a source of strength and comfort to you? 1 - None 2 - A little 3 - A great deal.
2. Do you believe there is a life after death? 1 - Yes 2 - No 3 - Undecided
3. God's goodness and love are greater than we can possibly imagine. 1 - Agree strongly 2 - Agree somewhat 3 - Can't decide 4 - Disagree somewhat 5 - Disagree strongly
4. Despite all the things that go wrong, the world is still moved by love. 1 - Agree strongly 2 - Agree somewhat 3 - Can't decide 4 - Disagree somewhat 5 - Disagree strongly
5. When faced with a tragic event I try to remember that God still loves me and that there is hope for the future. 1 - Agree strongly 2 - Agree somewhat 3 - Can't decide 4 - Disagree somewhat 5 - Disagree strongly
6. I feel that it is important for my children to believe in God. 1 - Agree strongly 2 - Agree somewhat 3 - Can't decide 4 - Disagree somewhat 5 - Disagree strongly
7. I think that everything that happens has a purpose. 1 - Agree strongly 2 - Agree somewhat 3 - Can't decide 4 - Disagree somewhat 5 - Disagree strongly

Private religious practices questionnaire

1. How often do you pray privately in places other than at church or synagogue? 1 - Several times a day 2 - Once a day 3 - A few times a week 4 - Once a week 5 - A few times a month 6 - Once a month 7 - Less than once a month 8 - Never
2. How often do you watch or listen to religious programs on TV or radio? 1 - Several times a day 2 - Once a day 3 - A few times a week 4 - Once a week 5 - A few times a month 6 - Once a month 7 - Less than once a month 8 - Never
3. How often do you read the Bible or other religious literature? 1 - Several times a day 2 - Once a day 3 - A few times a week 4 - Once a week 5 - A few times a month 6 - Once a month 7 - Less than once a month 8 - Never
4. How often are prayers or grace said before or after meals in your home? 1 - At all meals 2 - Once a day 3 - At least once a week 4 - Only on special occasions 5 - Never

Demographic profile

Table 1: Demographic profile of the respondents

Variable	Description	Frequency	%
Gender	Male	120	100%
Age	18-30 years	3	3%
	31-40 years	28	23%
	41-50 years	50	42%
	above 50 years	39	33%
Marital status	Married	120	100%
	Married and widower		
household status	Head	120	100%
	House wife		
Educational Qualification	Illiterate	15	13%
	Read and write	70	58%
	Below 10th Std	6	5%
	10 std	13	11%
	12std	5	4%
	Graduate	10	8%
	Master	1	1%
Occupation	Agriculture	101	84%
	daily wages earner	8	7%
	salary employee	10	8%
	home maker	1	1%
	Others		
Annual Income	Upto 50,000	102	85%
	Rs 50,001 to 1,00,000	16	13%
	Above 1,00,000	2	2%

From the above analysis of gender profile of the respondents, it is observed that male proportion is 100% as it took only in male for the study.

It may be inferred from the analysis of age profile of the responded that majority of the population lies between 41-50 years and constitute 42%. The age group of above 50 years scores the highest of 42% and the least records to 18-30 years constituting 3%.

From the above table, marital status of the respondents found that 120 were in married and this constitutes 100% of the respondents.

It may be inferred from the analysis of household status that majority of them were head. These comprise of 120 and constitute 100%. The analysis clearly reveals the demographic awareness profile of the respondents on socio economic aspects.

The above table depicts the educational level of the respondents. The results show that read and write comprises of 70 and constitute 58 % were the highest. The second comprise

of 15 in illiterate and graduate constitute 13 % each. Therefore it is very clear that the large number of respondents covered is read and write.

The above table depicts the occupational status of the respondents. The result show that respondents in agriculture were the highest comprise of 101 and constitute 84%. It is followed by salary employee comprises of 10 and constitute 8% of the total population.

The above table shows the annual income of the respondents selected for the study. Most of the executives are in the range of 50,000 comprises of 102 and constitute 85%. Thus, it is inferred that the executives with the annual income up to 50,000 are found to be large number among the respondents.

Belief, private religious practice, religious life, commitment

Belief is considered to be the individual satisfied. It is a trustworthy and devotee to the religion. According to the rongmei male community, so far study found that they didn't by others. There is much strength on Baptist religion. They also belief that through Baptist denomination, their religious will be comfort. They too believe that there will be life after death. There is greater love from god what they had expected. It is the perseverance for them in belief. In question 1, most of the individual answer to a great deal and in 2, 120 individual responses to none. In question 3 to 7, all the individual response to agree strongly.

Private religious practice is a way that individual behaves on their religion or devotee. Rongmei male are more looking to private religious practice particularly on longmai area. In question 1 of private religious practice, 60 individual responses to several times a day, 48 individual responses to a few times a week, 12 individual responses to a time a month. In question 2, 120 individual responses to a times a week. In question 3, 60 each of individual responses to a few times a week and a time a month. In question 4, 120 individual responses to at all meals.

Religious life and commitment is the consecrated or fully like to individual performance. In rongmei male of Longmai as per study, they belief on religious life. In question 1, most of the individual answer to a great deal and in 2, 120 individual responses to none. In question 3 to 7, all the individual response to agree strongly. In question 1 of private religious practice, 60 individual responses to several times a day, 48 individual responses to a few times a week, 12 individual responses to a time a month. In question 2, 120 individual responses to a times a week. In question 3, 60 each of individual responses to a few times a week and a time a month. In question 4, 120 individual responses to at all meals.

Result

Table 2 Model summary 1 of the respondent on linear regression

Model Summary^b

Model	R	R Square	Adjusted R Square	Std. Error of the Estimate	Change Statistics	
					R Square Change	F Change
1	.081 ^a	.006	-.010	.81796	.006	.382

Table 2 depicts the model summary 1 of the respondent on linear regression. It shows that R is .081^a, R square is .006, Adjusted R square is -.010, Std. Error of the Estimate is .81796, R square change is .006 and F change is .382. Here, we take R Square change and F change. Since the value is less than 0.05 alpha levels, it is significant for belief and private religious practice. Here the data is significant because the responding was a commitment to the questionnaire. It related that belief and private religious practice was use for religious life of an individual.

Table 3 Model summary 2 of the respondent on linear regression

Model Summary^b

Model	Change Statistics		
	df1	df2	Sig. F Change
1	2 ^a	117	.683

Table 3 depicts the model summary 2 of the respondent on linear regression. It shows that df1 is 2^a, df2 is 117 and Sig F Change is .683. Here, we take Sig. F Change. Since the value is less than 0.05 alpha levels, it is significant for belief and private religious practice.

Table 4 ANOVA analysis of the respondent on linear regressionANOVA^a

Model	Sum of Squares	Df	Mean Square	F	Sig.
Regression	.511	2	.256	.382	.683 ^b
1 Residual	78.280	117	.669		
Total	78.792	119			

Table 4 depicts the ANOVA analysis of the respondent on linear regression. In regression, sum of square is .511, Df is 2, mean square is .256, F is .382 and Sig. is .683^b. In residual, Sum of squares is 78.280, Df is 117, mean square is .669. Here, we take Mean Square, F and Sig. Since the value is less than 0.05 alpha levels, it is significant for belief and private religious practice as religious life commitment.

Table 5 Residuals Statistics^a of the respondent on linear regressionResiduals Statistics^a

	Minimum	Maximum	Mean	Std. Deviation	N
Predicted Value	2.9545	3.1894	3.0417	.06555	120
Residual	-2.03788	1.04545	.00000	.81106	120
Std. Predicted Value	-1.329	2.254	.000	1.000	120
Std. Residual	-2.491	1.278	.000	.992	120

Table 5 depicts the Residuals Statistics^a of the respondent on linear regression. In predicted value, minimum is 2.9545, maximum is 3.1894, mean is 3.0417, Std. deviation is .06555. In residual, minimum is -2.03788, maximum is 1.04545, mean is .00000, Std. deviation is .81106. In Std. Predicted value, minimum is -1.329, maximum is 2.254, mean is .000 and Std. deviation is 1.000. In Std. Residual, minimum is -2.491, maximum is 1.278, mean is .000 and Std. deviation is .992. Here, we take Std. deviation as the value. Since the number is less than 0.05 alpha levels or closer to 0 (1.000), it is significant for commitment of religious life through belief and private religious practice.

Histogram analysis

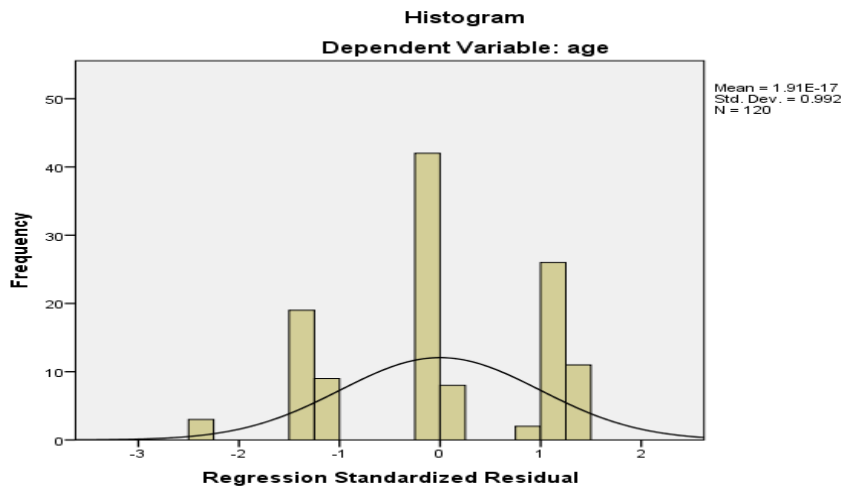


Fig a: Histogram analysis of the respondent

Fig a, depicts the histogram analysis of the respondent on linear regression. Dependent is age. Frequency indicates the age and regression standard residual indicate the response level or weightage. Mean is recorded to 1.91E=17 and Std. Deviation is 0.992. Here the number is almost closer to 0, it is also significant. It is seen that the curve is pointed in the middle and slide down on side wise, so it is significant.

Discussion

Table 6 Item statistics of respondent on scale reliability

Item Statistics

	Mean	Std. Deviation	N
How often do you pray privately in places other than at church or synagogue?	2.2000	1.33221	120
How often do you read the Bible or other religious literature?	4.0000	1.00419	120

Table 6 explore on item statistics when deleted of the respondent on scale reliability. In “How often do you pray privately in places other than at church or synagogue?” mean is 2.2000 and Std. deviation is 1.33221. In “How often do you read the Bible or other religious literature?” mean is 4.0000 and Std. deviation is 1.00419. Here we take Std.

deviation as the significant value for belief and private religious practice. Since the number is closer to 0, it significant of the study.

Table 7 Summary Item Statistics of the respondent on scale reliability

Summary Item Statistics

	Mean	Minimum	Maximum	Range	Maximum / Minimum	Variance
Item Means	3.100	2.200	4.000	1.800	1.818	1.620
Item Variances	1.392	1.008	1.775	.766	1.760	.294

Table 7 depicts the summary item statistics of the respondent on scale reliability. In item means, mean is 3.100, minimum is 2.200, maximum is 4.000, range is 1.800, maximum/minimum is 1.818 and variance is 1.620. In item variances, mean is 1.392, minimum is 1.008, maximum is 1.775, range is .766, maximum/minimum is 1.760 and variance is .294. Here, we take range, maximum/minimum and variance as the value. Since the value is closer to 0 and less than 0.05 alpha value, it is significant for belief and private religious practice.

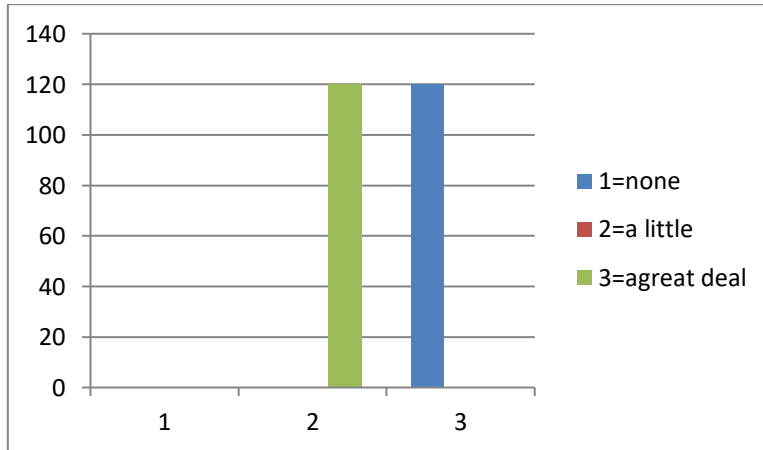


Fig b: bar showing question 1 and 2 of belief respondent

Fig b depicts the question 1 and 2 of belief of the respondent. Left horizontal indicates the number of individuals and bottom line indicates the weightage. As we have seen that majority of the individuals response to a great deal (question 1) and none (question 2). This shows a strong commitment of religious life through belief.

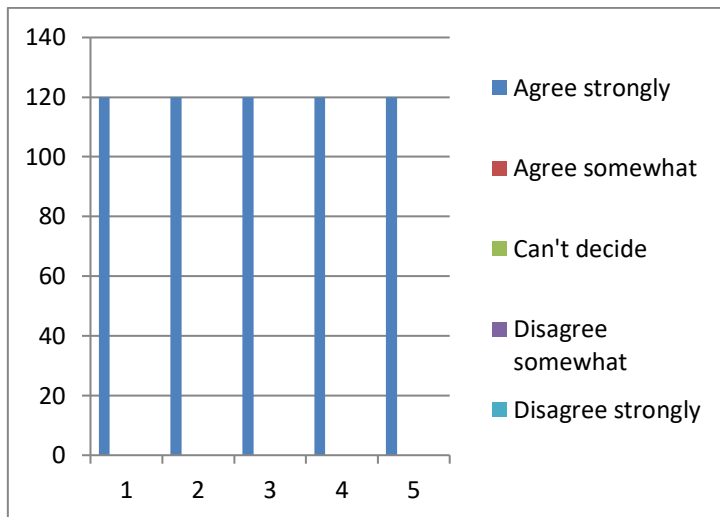


Fig c: bar showing question 3 to 7 of belief respondent

Fig c depicts the question 3 to 7 of belief of the respondent. Left horizontal indicates the number of individuals and bottom line indicates the weightage. As we have seen that majority of the individuals response to agree strongly. This shows a strong commitment of religious life through belief.

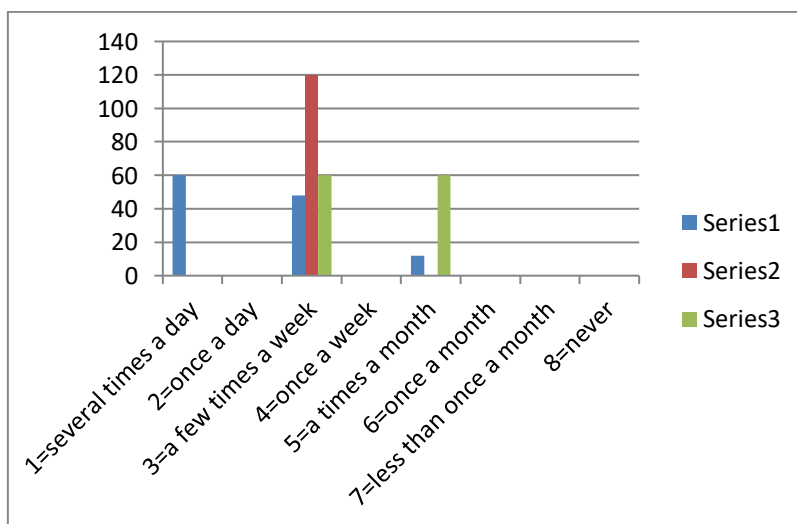


Fig d: bar showing question 1 to 3 of private religious practice of the respondent

Fig d depicts the question 1 to 3 of private religious practice of the respondent. Series represent how many individual responses to weightage. Several times day in question 1 and response by 60 individual and is major response. In question 2, 120 individual response to a few times a week and indicates by brown. In 3, 60 individual each response to a few and

a times a month. Left side horizontal of the bar denotes the individuals and bottom line denotes the weightage. This shows that individuals have different commitment for religious life through private religious practice.

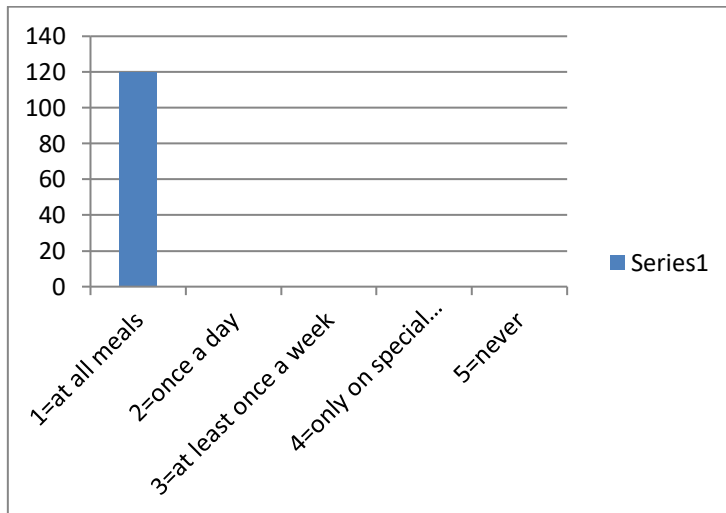


Fig e: bar showing question 4 of private religious practice of the respondent

Fig e explore on question 4 of private religious practice of the respondent. Series 1 indicates at all meals and response by 120 individuals. This shows a commitment to religious life through private religious practice of an individual.

Recommendations and conclusion

The study has some limitation. Since there is no previous study on belief and private religious practice on male rongmei community, it is difficult to compare and there is no comparison. Only some external sources were relied to compare. But so far there is no compare in the study. It is purely original. Moreover, the study was first to analyse using SPSS software on religious life among rongmei community, it took only 120 male. Since the study is significant, we assume that, religious life through belief and private religious practice is greater on the male. Further, many research scholar can also study young age, female as well elder on comparison to this study. These study analyse will help for upcoming scholar as reference.

Conflict of interest

The authors declare there is no conflict of interest.

Funding

Author is a recipient of Indian Council of Social Science Research Doctoral Fellowship. His article is largely an outcome of his doctoral work sponsored by ICSSR

References

Abelson, R. P. "Differences between belief and knowledge systems". *Cognitive Science*, 3, 355-366. 1979.

Asebedo, S. D., & Seay, M. C. "Positive psychological attributes and retirement satisfaction". *Journal of Financial Counseling and Planning* 25(2), 161-173. 2014.

Barrera, M. J. "Distinctions between social support concepts, measures, and models". *American Journal of Community Psychology*, 14, 413-445. 1986.

Benson, P., & Spilka, B. "God image as a function of self-esteem and locus of control". *Journal for the Scientific Study of Religion*, 12, 297-310. 1973.

Becker, H.S. "Notes on the Concept of Commitment". *American Journal of Sociology*, 66, 32-40. 1960.

Berry, J. W. "Immigration, acculturation, and adaptation". *Applied Psychology*, 46, 5-34. <https://doi.org/10.1111/j.1464-0597.1997.tb01087.x>. 1997

Bernard, M.E. "Validation of the General Attitude and Belief Scale". *Journal of Rational- Emotive and Cognitive Behavior Therapy*, 16(3), 183-196. 1998.

Bierman, A. "Does religion buffer the effects of discrimination on mental health? Differing effects by race". *Journal for the Scientific Study of Religion*, 45, 551-565. <https://doi.org/10.1111/j.1468-5906.2006.00327.x>. 2006.

Bjork, J.P., & Cohen, L. "Coping with threats, losses, and challenges". *Journal of Clinical and Social Psychology*, 12, 56-72. 1993.

Bjork, J. P., & Fiala, W. E. "God concept, appraisal, religious coping and adjustment". Poster session presented at the California Psychological Association's 51st Annual Convention, Pasadena. 1998.

CA. Bradley, D. E. "Religious involvement and social resources: Evidence from the data set "Americans' changing lives." *Journal for the Scientific Study of Religion*, 34, 259-267. 1995.

Bolger, N., Davis, A., & Rafaeli, E. "Diary methods: Capturing life as it is lived". *Annual Review of Psychology*, 54, 579-616 <https://doi.org/10.1146/annurev.psych.54.101601.145030>. 2003.

Bonab, B. G., Miner, M., & Proctor, M. T. "Attachment to God in Islamic spirituality". *Journal of Muslim Mental Health*, 7(2), 77-104. 2013.

Burris, J. L., Brechting, E. H., Salsman, J., & Carlson, C. R. "Factors associated with the psychological well-being and distress of university students". *Journal of American College Health*, 57, 536-543. <https://doi.org/10.3200/JACH.57.5.536-544>. 2009.

Capanna, C., Stratta, P., Collazoni, A., & Rossi, A. "Construct and concurrent validity of the Italian version of the Brief Multidimensional Measure of

Religiosity/Spirituality". *Psychology of Religion and Spirituality*, 5, 316-324. <https://doi.org/10.1037/a0033642>. 2013.

Carey, R. C." Emotional adjustment in terminal patients: A quantitative approach". *Journal of Counseling Psychology*, 21, 433-439. 1974

Chalfant,H.P.,Heller,P.L.,Roberts,A.,Briones,D.,Aguirre-Hochbaum,S.,&Farr,W. "The clergy as a resource for those encountering psychological distress". *Review of Religious Research*, 31, 305-313. 1990.

Chamberlain, K., & Zika, S. "Religiosity, meaning in life, and psychological well-being". In J. F. Schumaker (Ed.), *Religion and mental health*. New York, NY: Oxford University Press. 1992.

Chartier, M. R., & Goehner, L. A. "A study of the relationship of parent-adolescent communication, self-esteem, and God image". *Journal of Psychology and Theology*,4,227- 232. 1976.

Clark, K. K., Bormann, C. A., Cropanzano, R. S., & James, K. "Validation evidence for three coping measures". *Journal of Personality Assessment*, 65(3), 434-455. 1995.

Cobb, S. "Social support as a moderator of life stress". *Psychosomatic Medicine*, 38, 300- 314. 1976.

Cohen, D., Yoon, D. P., & Johnstone, B. "Differentiating the impact of spiritual experiences, religious practices, and congregational support on the mental health of individuals with heterogeneous medical disorders". *International Journal for the Psychology of Religion*, 19, 121-138. <https://doi.org/10.1080/10508610802711335>. 2009.

Cohen, S., Doyle, W. J., Skoner, D. P., Rabin, B. S., & Gwaltney, J. M. "Social ties and susceptibility to the commoncold". *Journal of the American Medical Association*,277,1940- 1944. 1997.

Cohen, S., & Wills, T. A. "Stress, social support, and the buffering hypothesis". *Psychological Bulletin*,98,310-357. 1985.

Cole,D.A.,Martin,J.M.,Peeke,L.,Henderson,A.,&Harwell,J. "Validation of depression and anxiety measures in White and Black youths: Multi trait-multi method analyses". *Psychological Assessment*, 10(3), 261-276. 1998.

Court, J. H. "Church-related counseling in Australia". *Journal of Psychology and Christianity*, 16(2), 142-147. 1997.

Credé, M., & Niehorster, S. "Adjustment to college as measured by the Student Adaptation to College Questionnaire: A quantitative review of its structure and relationships with correlates and consequences". *Educational Psychology Review*, 24, 133-165. <https://doi.org/10.1007/s10648-011-9184-5>. 2012.

Cronbach, L. J. "Coefficient alpha and the internal structure of tests". *Psychometrika*,16,297-334. 1951

Cutrona, C. E. "Ratings of social support by adolescents and adult informants: Degree of correspondence and prediction of depressive symptoms". *Journal of Personality and Social Psychology*, 57, 723-730. 1989.

Cutrona, C. E., Cole, V., Colangelo, N., Assouline, S. G., & Russell, D. W. "Perceived parental social support and academic achievement: An attachment theory perspective". *Journal of Personality and Social Psychology*, 66, 369-378. 1994.

Cutrona, C. E., & Russell, D. W. "The provisions of social relationships and adaptation to stress". In W. H. Jones & D. Perlman (Eds.), *Advances in personal relationships* (Vol. 1, pp. 37-67). Greenwich, CT: JAI Press. 1987.

Dezutter, J., Soenens, B., & Hutsebaut, D. "Religiosity and mental health: A further exploration of the relative importance of religious behaviors vs. religious attitudes". *Personality and Individual Differences*, 40, 807-818. <https://doi.org/10.1016/j.paid.2005.08.014>. 2006.

Dezutter, J., Robertson, L. A., Luyckx, K., & Hutsebaut, D. "Life satisfaction in chronic pain patients: The stress-buffering role of the centrality of religion". *Journal for the Scientific Study of Religion*, 49(3), 507-516. doi: 10.1111/j.1468-5906.2010.01525.x. 2010.

Diener, E., Tay, L., & Myers, D. G. "The religion paradox: If religion makes people happy, why are so many dropping out?". *Journal of Personality and Social Psychology*, 101, 1278-1290. <https://doi.org/10.1037/a0024402>. 2011.

Ellison, C. G. "Religious involvement and subjective well-being". *Journal of Health and Social Behavior*, 32, 80-99. 1991.

Ellison, C. G., Gay, D. A., & Glass, T. A. "Does religious commitment contribute to individual life satisfaction?" *Social Forces*, 68, 100-123. 1989.

Ellison, C. G., & George, L. K. "Religious involvement, social ties, and social support in a southeastern community". *Journal for the Scientific Study of Religion*, 33, 46-61. 1994.

Folkman, S., Chesney, M. A., Pollack, L., & Phillips, C. "Stress, coping, and high risk sexual behavior". *Health Psychology*, 11, 218-222. 1992

Gorsuch, R. L. "The conceptualization of God as seen in adjective ratings". *Journal for the Scientific Study of Religion*, 7, 56-64. 1968.

Gorsuch, R. L. "Factor analysis". New Jersey: Erlbaum. 1983.

Gorsuch, R. L. "Psychology of religion". *Annual Review of Psychology*, 39, 201-221. 1988

Gorsuch, R. L. "UniMult for univariate and multivariate data analysis". Altadena, CA: UniMult. 1991.

Grable, J., & Ruiz-Menjivar, J. "Household and personal finance journal rankings using patterns of authorship and the author affiliation index (working paper)". Retrieved from <https://ssrn.com/abstract=2570891>. 2014.

Graham, J., & Haidt, J. "Beyond beliefs: Religions bind individuals into moral communities". *Personality and Social Psychology Review*, 14, 140-150. <https://doi.org/10.1177/1088868309353415> . 2010.

Guadagnoli, E., & Velicer, W. F. "Relation to sample size to the stability of component patterns". *Psychological Bulletin*, 103(2), 265-275. 1988.

Hadaway, C.K., & Roof, W.C. "Religious commitment and the quality of life in American society". *Review of Religious Research*, 19, 295-307. 1978.

Hill, P. C., & Pargament, K. I. "Advances in the conceptualization and measurement of religion and spirituality". *American Psychologist*, 58(1), 64-74. 2003.

Hogg, M. A., Adelman, J. R., & Blagg, R. D. "Religion in the face of uncertainty: An uncertainty-identity theory account of religiousness". *Personality and Social Psychology Review*, 14, 72-83. <https://doi.org/10.1177/1088868309349692>. 2010.

Johnstone, B., McCormack, G., Yoon, D., & Smith, M. "Convergent/Divergent Validity of the Brief Multidimensional Measure of Religiousness/Spirituality: Empirical Support for Emotional Connectedness as a 'Spiritual' Construct". *Journal Of Religion & Health*, 51(2), 529-541. doi:10.1007/s10943-011-9538-9. 2012.

Jolley, J. C., & Taulbee, S. J. "Assessing perceptions of self and God: Comparison of prisoners and normal". *Psychological Reports*, 59, 1139-1146. 1986.

Keyes, C. L. M., & Reitzes, D. C. "The role of religious identity in the mental health of older working and retired adults". *Aging and Mental Health*, 11, 434-443. <https://doi.org/10.1080/13607860601086371>. 2007.

Khan, S. S., Hopkins, N., Reicher, S., Tewari, S., Srinivasan, N., & Stevenson, C. "Shared identity predicts enhanced health at a mass gathering". *Group Processes and Intergroup Relations*, 18, 504-522. <https://doi.org/10.1177/1368430214556703>. 2015.

Kiesler, C.A. "The psychology of commitment: Experiments linking behavior to belief". San Diego, CA: Academic Press. 1971.

Kim-Prieto, C., & Diener, E. "Religion as a source of variation in the experience of positive and negative emotions". *Journal of Positive Psychology*, 4, 447-460. <https://doi.org/10.1080/17439760903271025>. 2009.

Kirkpatrick, L. A. "Attachment theory and religious experience. In R. W. Hood (Ed.), *Handbook of religious experience: Theory and practice*". Advances in personal relationships (pp. 446-475). Birmingham, AL: Religious Education Press. 1995.

Kirkpatrick, L.A., Shillito, D.J., & Kellas, S.L. "Loneliness, social support, and perceived relationships with God". *Journal of Social and Personal Relationships*, 16(4), 513-522. 1999.

Kirkpatrick, L. A., & Shaver, P. R. "Attachment theory and religion: Childhood attachments, religious beliefs, and conversion". *Journal for the Scientific Study of Religion*, 29(3), 315-334. doi: 10.2307/1386461. 1990.

Kloos, B., Horneffer, K., & Moore, T. "Before the beginning: Religious leaders' perceptions of the possibility for mutually beneficial collaboration with psychologists". *Journal of Community Psychology*, 23, 275-291. 1995.

Knipscheer, J. W., & Kleber, R. J. "Acculturation and mental health among Ghanaians in the Netherlands". *International Journal of Social Psychiatry*, 53, 369-383. <https://doi.org/10.1177/0020764007078344>. 2007.

Koenig, H. G., Cohen, H. J., Blazer, D. G., Pieper, C., Meador, K. G., Shelp, F., et al. "Religious coping and depression among elderly, hospitalized medically ill men". *American Journal of Psychiatry*, 149, 1693-1700. 1992.

Koenig, H. G., George, L. K., & Siegler, I. C. "The use of religion and other emotion regulating coping strategies among older adults". *The Gerontologist*, 28, 303-310. 1988.

Kosmin, B. A., & Lachman, S. P. "One nation under God: Religion in contemporary American society". New York: Harmony Books. 1993.

Krause, N., Ellison, C. G., & Wulff, K. M. "Church-based emotional support, negative interaction, and psychological well-being: Findings from a national sample of Presbyterians". *Journal for the Scientific Study of Religion*, 37(4), 725-741. 1998.

Lopez, A. B., Huynh, V. W., & Fuligni, A. J. "A longitudinal study of religious identity and participation during adolescence". *Child Development*, 82, 1297-1309. <https://doi.org/10.1111/j.1467-8624.2011.01609.x>. 2011

Maltby, J., & Day, L. "Religious orientation, religious coping and appraisals of stress: Assessing primary appraisal factors in the relationship between religiosity and psychological well-being". *Personality and Individual Differences*, 34, 1209-1224. [https://doi.org/10.1016/S0191-8869\(02\)00110-1](https://doi.org/10.1016/S0191-8869(02)00110-1). 2003

Maselko, J., Gilman, S. E., & Buka, S. "Religious service attendance and spiritual well-being are differentially associated with risk of major depression". *Psychological Medicine*, 39, 1009-1017. <https://doi.org/10.1017/S0033291708004418>. 2009.

Maton, K. I. "Social support, organizational characteristics, psychological well-being, and group appraisal in three self-help group populations". *American Journal of Community Psychology*, 16, 53-77. 1988.

Maton, K. I. "Community settings as buffers of life stress? Highly supportive churches, mutual help groups, and senior centers". *American Journal of Community Psychology*, 17, 203-232. 1989a

Maton, K. I. 1989b. "The stress-buffering role of spiritual support: Cross-sectional and prospective investigations". *Journal for the Scientific Study of Religion*, 28, 310-323. 1989b.

Maton, K. I., Pargament, K. I., & Hess, R. E. (Eds.). "Religion and prevention in mental health: Community intervention (Special Issue)". *Prevention in Human Services*, 10(1). 1991.

Maton, K.I., & Salem, D.A. "Organizational characteristics of empowering community settings: A multiple case study approach". *American Journal of Community Psychology*, 23, 631-656. 1995.

Maton, K.I., & Wells, E.A. "Religion as a community resource for well-being: Prevention, healing, and empowerment pathways". *Journal of Social Issues*, 51, 177-193. 1995.

Op't Eynde, P., De Corte, E., & Verschaffel, L. "Framing students' mathematics-related beliefs. A quest for conceptual clarity and a comprehensive categorization". In G. C. Leder, E. Pehkonen & G. Törner (Eds.), *Beliefs: A hidden variable in mathematics education?* (pp. 13-38). Dordrecht: Kluwer Academic Publishers. 2002.

Park, C., Cohen, L. H., & Herb, L. "Intrinsic religiousness and religious coping as life stress moderators for Catholics versus Protestants". *Journal of Personality and Social Psychology*, 59(3), 562-574. doi: 10.1037/0022-3514.59.3.562. 1990.

Pehkonen, E., & Pietilä, A. "On relationships between beliefs and knowledge in mathematics education". Paper presented at the CERME 3: Third conference of the European society for research in mathematics education, Bellaria, Italy. 2003.

Piedmont, R. L., Mapa, A. T., & Williams, J. E. G. "A factor analysis of the Fetzer/NIA brief multidimensional measure of religiousness/spirituality". *Research in the Social Scientific Study of Religion*, 17, 177-196. 2007.

Reichers, A.E. "A Review and Reconceptualisation of Organisational Commitment," *Academy of Management Review*, 10, 465 - 476. 1985.

Rousseau, D. M. "Why workers still identify with organizations". *Journal of organizational Behaviors*. 19, 217-233. 1998.

Siegel, K., Anderman, S. J., & Schrimshaw, E. W. "Religion and coping with health related stress". *Psychology and Health*, 16(6), 631-653. doi: 10.1080/08870440108405864. 2001.

Sipon, S., Othman, K., Ghani, Z. A., & Radzi, H. M. "The impact of religiosity on financial debt and debt stress". *Procedia-Social and Behavioral Sciences*, 140, 300-306. doi: 10.1016/j.sbspro.2014.04.424. 2014.

Smith, T. B., McCullough, M. E., & Poll, J. "Religiousness and depression: Evidence for a main effect and the moderating influence of stressful life events". *Psychological Bulletin*, 129(4), 614-636. doi: 10.1037/0033-2909.129.4.614. 2003.

Stein, C. H., Hoffmann, E., Bonar, E. E., Leith, J. E., Abraham, K. M., Hamill, A. C., Kraus, S. W., Gumber, S., & Fogo, W. R. "The United States economic crisis: Young adults' reports of economic pressures, financial and religious coping and psychological well-

being". *Journal of Family and Economic Issues*, 34(2), 200-210. doi: 10.1007/s10834-012-9328-x. 2013.

Tewari, S., Khan, S., Hopkins, N., Srinivasan, N., & Reicher, S. "Participation in mass gatherings can benefit well-being: Longitudinal and control data from a North Indian Hindu pilgrimage event". *Plos One*, 7(10), e47291. <https://doi.org/10.1371/journal.pone.0047291>. 2012.

Thompson, A. "Teachers' beliefs and conceptions: A synthesis of the research". In D. A. Grouws (Ed.), *Handbook of research in mathematics teaching and learning* (pp. 127-146). New York: MacMillan. 1992.

Van Praag, B. M., Romanov, D., & Ferrer-i-Carbonell, A. "Happiness and financial satisfaction in Israel: Effects of religiosity, ethnicity, and war". *Journal of Economic Psychology*, 31(6), 1008-1020. doi: 10.1016/j.joep.2010.08.008. 2010.

Vilchinsky, N., & Kravetz, S. "How are religious belief and behavior good for you? An investigation of mediators relating religion to mental health in a sample of Israeli Jewish students". *Journal for the Scientific Study of Religion*, 44, 459-471. <https://doi.org/10.1111/j.1468-5906.2005.00297.x>. 2005.

Whittington, B. L., & Scher, S. J. "Prayer and subjective well-being: An examination of six different types of prayer". *International Journal for the Psychology of Religion*, 20(1), 59-68. doi: 10.1080/10508610903146316. 2010.

Ysseldyk, R., Matheson, K., & Anisman, H. "Religiosity as identity: Toward an understanding of religion from a social identity perspective". *Personality and Social Psychology Review*, 14, 60-71. <https://doi.org/10.1177/1088868309349693>. 2010.